

Pillowcase Apron



You need:

- A pillow case, 100% cotton or linen (standard or queen for girls, king for women)
- A binding tape or woven tape, ½ - 1 inch wide and 5 feet long. You can make a colorful tape by yourself using a tape loom (following the instructions on the Hyland House website)
- Sewing equipment:
 - Measuring tape
 - A ruler, scissors and a pencil
 - Needle, thread or sewing machine
 - Sewing pins



Cutting the Pillowcase

Step 1:

Optional: Iron the pillowcase if it's very much wrinkled.

Step 2:

Cut off the first 3 inches on the opening of the pillowcase where the fabric is double and maybe pleated.



Step 3:

Turn the pillowcase inside out. Make another cut at the pillowcase opening. Angle the cut. Starting from the end and ending 1" away from the other end. You can use the pencil and ruler to mark the cutting line.



Step 4:**Important:**

Mark the ending point that is 1" shorter. This point will be the top middle of your apron.

**Step 5:**

Cut open the side seam that is not marked. Leave the marked side seam closed.



**Step 6:**

Cut open the bottom of the pillow case.





Your pillowcase now only has one closed seam left.

If you unfold the fabric, you should now have a nearly rectangular piece of fabric with a seam in the middle and a marked ending. The mark will be the middle top of the apron.



Sewing

Step 1:

Hem the sides and the bottom of the apron. The bottom of the apron is the side where no mark is. The mark is at the top.





Step 2: Optional

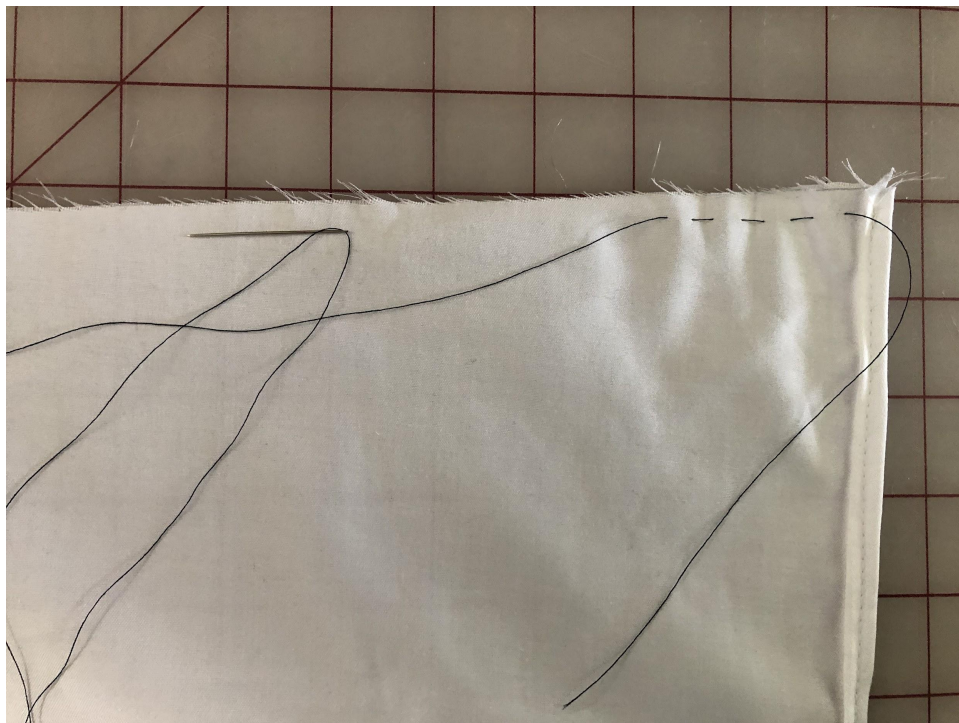
Zigzag or hem the top of your apron as well. This is advisable if you want to attach the tape at the front of the apron only and not fold the tape over the top edge - see Finishing.

Step 3:

Ruffle or pleat the top edge. To ruffle the edge, thread a needle place running stitches $\frac{1}{4}$ " away and along the top edge. The stitches can be $\frac{1}{4}$ " - $\frac{1}{8}$ " apart. You can also baste with the sewing machine. To do this, use the largest stitch size and don't secure the first and last stitches.

If you ruffle by hand, secure the end of your thread with multiple knots so that the thread can't slip through the fabric.





Attaching the tape

Step 1:

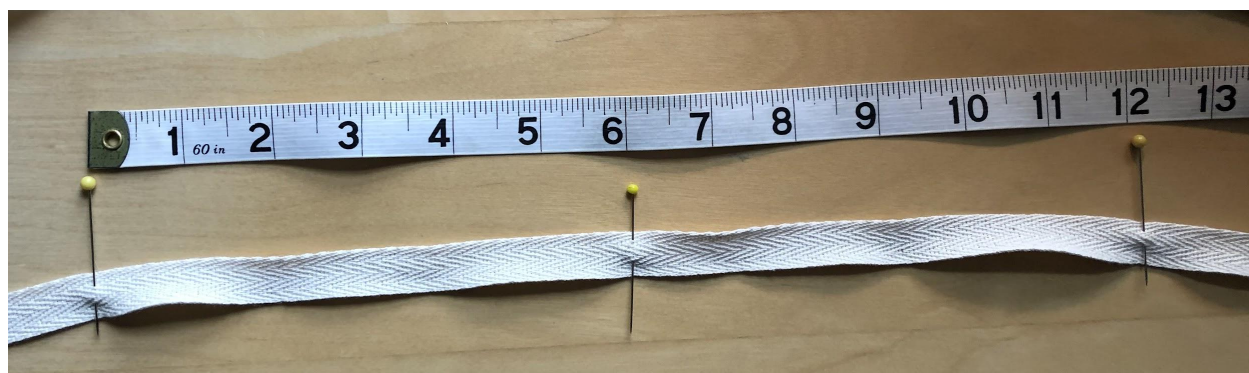
Measure your waist and divide by 2. Subtract 1". This is the length of your apron's top edge. For a child size 10 it would be about 12". These instructions use 12" for the apron.

Step 2:

Pull the thread to ruffle the fabric.

Step 3:

To pin the tape to the ruffled edge, take the woven tape, the measuring tape and three pins. Fold the 5 feet long tape in half. Place one pin in the middle of your tape. Place the other pins each 6" from the center pin. If your waist is larger than 25", the pins should be further apart.



Step 4:

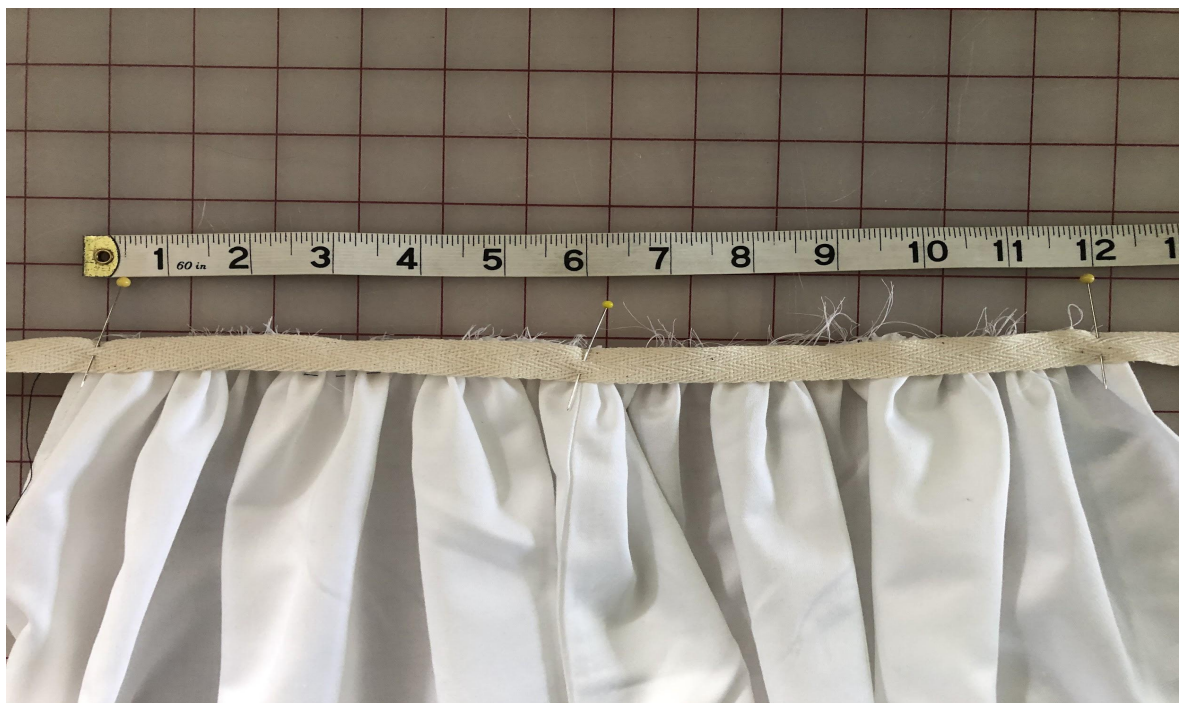
Decide if you want to attach the tape only at the front or fold over to attach at the front and back of the apron.

If you attach the front only, pin the tape on the front / right side of the ruffled fabric.

If you want to fold the tape over, pin the tape on the left / wrong side of the ruffled fabric. This will give a nicer finish.

Attach the tape with the ruffled edge by placing the middle pin to the ruffled edge where the marked pillowcase seam is. Match the outer pins with the endings of the ruffled edge. Spread the ruffles evenly.



**Step 4:**

Sew the tape to the ruffles. Catch all folds or ruffles. Then remove the basting stitches.



Finishing

Secure the ends of the tape by hemming them or making a knot.

If you want to fold over the fabric, trim the ruffled edge carefully, fold over the tape and attach from the other side by hand (hem stitch) or sewing machine.

